

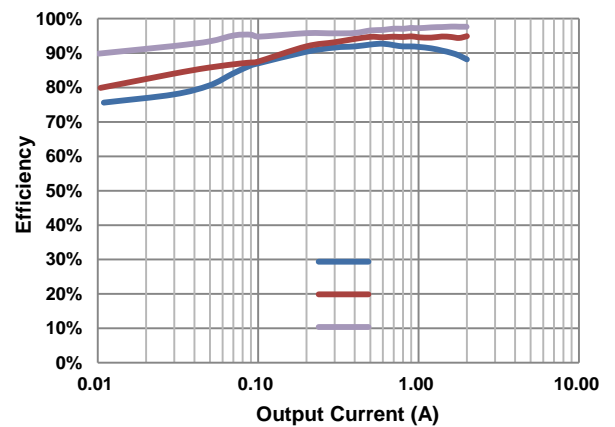
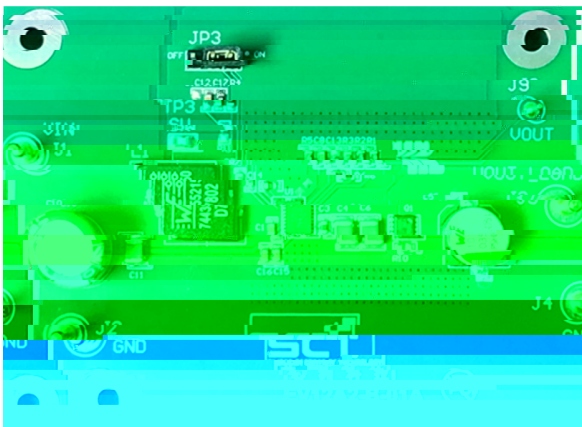
Board Number	IC Number

## PERFORMANCE SUMMARY

Specifications are at TA = 25°C

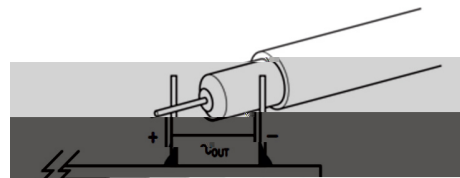
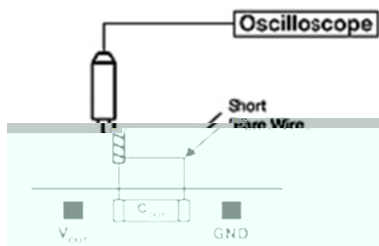
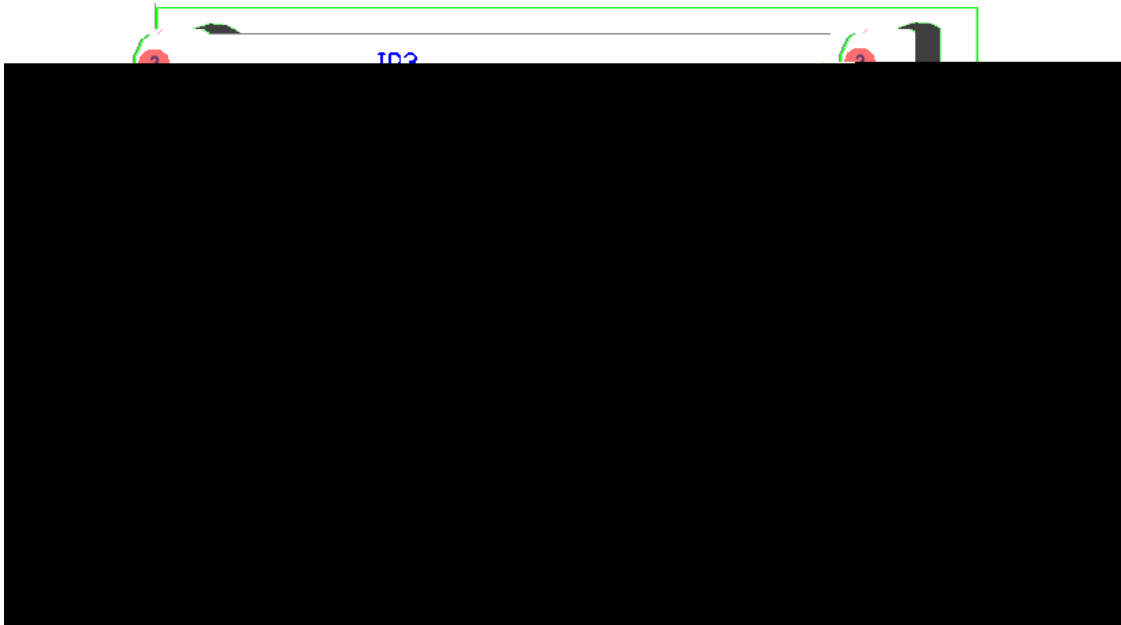
Table 1. Performance

Parameter	Condition	Value



## QUICK START PROCEDURE

•









**EV12A2-B-01A User's Guide**  
**30W Fully Integrated Synchronous Boost Converter in 20 Pin DFN**



### IMPORTANT NOTICE

This evaluation board kit being sold or provided by Silicon Content Technology is intended for use for ENGINEERING DEVELOPMENT OR EVALUATION PURPOSES ONLY and is not provided by SCT for commercial use. As such, the evaluation board herein may not be complete in terms of required design, marketing, and/or manufacturing related protective considerations, including but not limited to product safety measures typically found in finished commercial goods. The user assumes all responsibility and liability for proper and safe handling of the goods. Further, the user releases SCT from all claims arising from the handling or use of the goods. Due to the open construction of the product, it is the user's responsibility to take